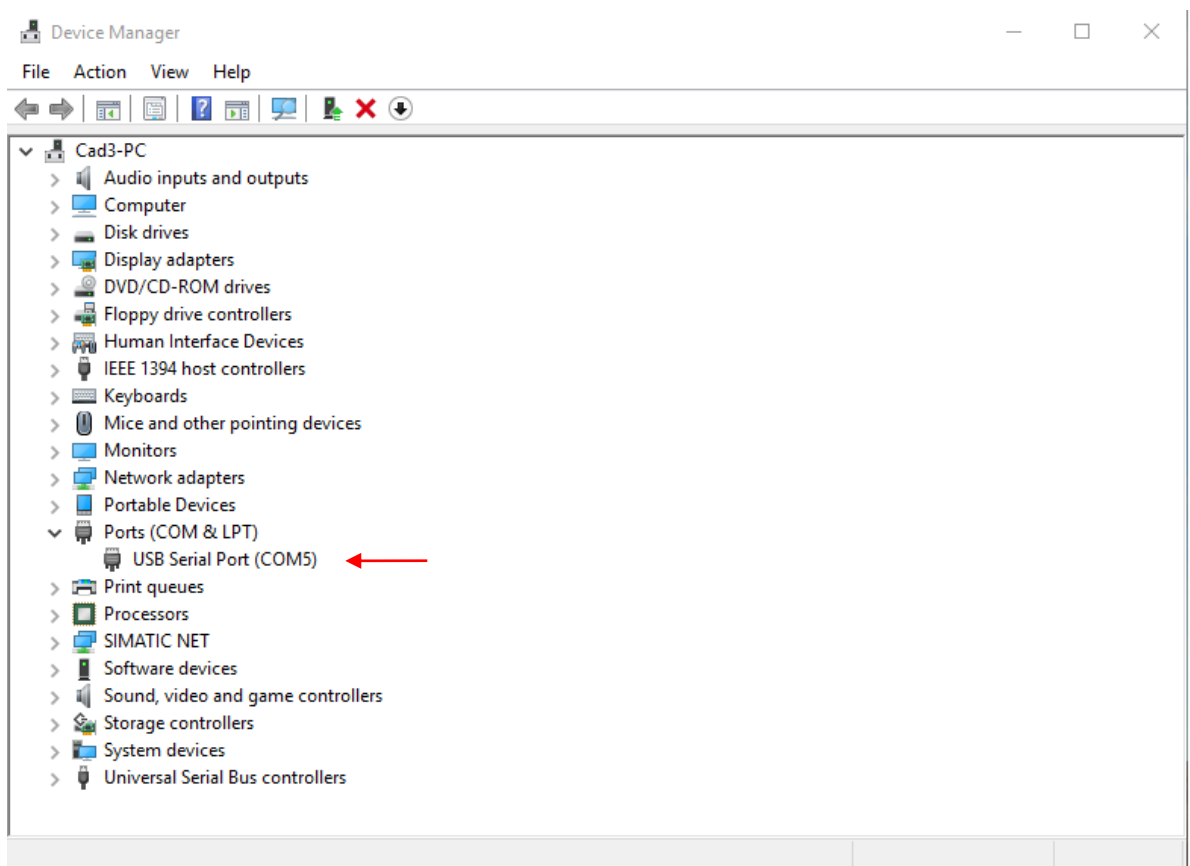


## Installation instruction USB driver and E-bike Connect Premium.

In this instruction you will see how the USB driver and the software of the Van Raam Silent System is installed correctly. The pc/ laptop has to be connected to the internet to download the driver and the software. **Attention!** This program is only supported by Windows Vista, 7, 8 and 10.

### Installing the USB driver.

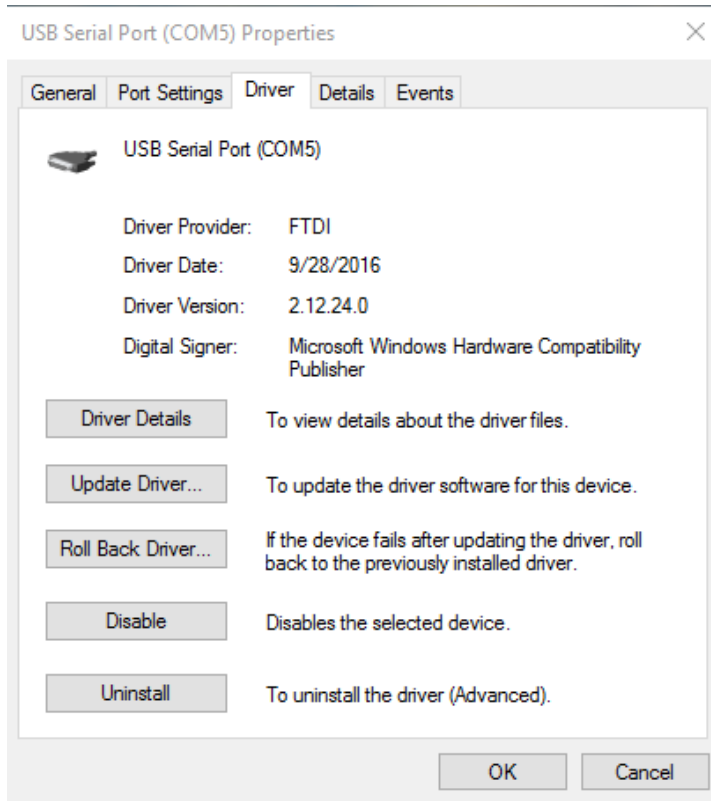
1. Go to this [link](#) and download [Driver USB Silent](#)
2. The file is opened as a .zip file. Extract the package on a location you can find easily, for example "my documents".
3. Connect your pc/laptop with the USB cable.  
The pc/ laptop tries to install the driver, because the driver is a special one, it can be that the pc/ laptop can't find a proper driver. When the pc/ laptop finds a proper one, you can skip step 5 till step 8 and you can go further with installing E-bike Connect.  
To install the driver correctly open Device manager (Start > search > Device manager).
4. You will see the next screen:



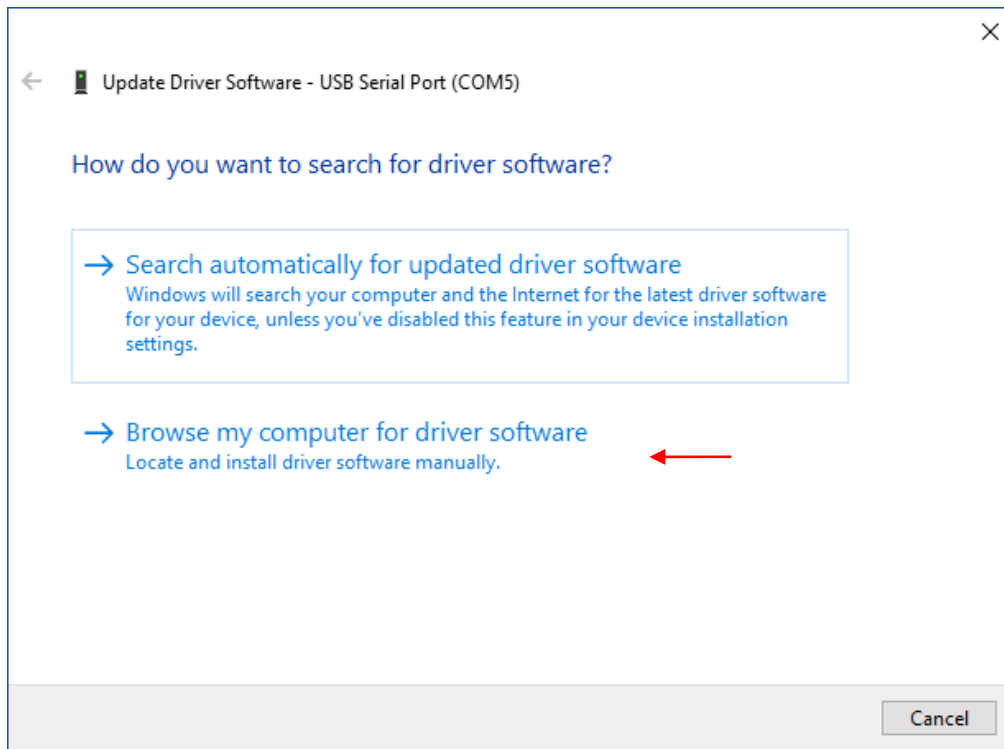
Click with the right mouse button on USB Serial Port (red arrow).

5. Click in the menu what appears "properties". Go to "Driver" in the menu "Properties".

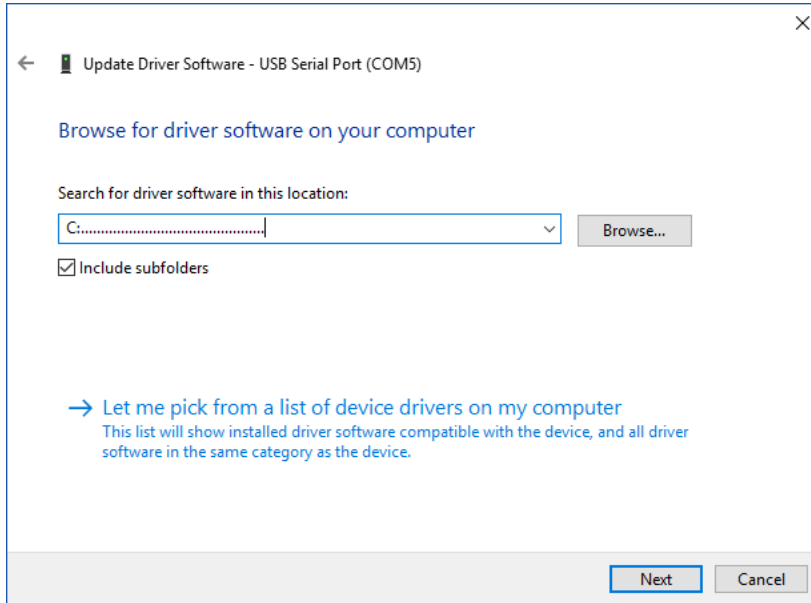
6. You will get the next screen:



Click on "Update Driver" and in the next menu on "Browse my computer for driver software" (red arrow) to install the driver.



7. Look for the folder where you putted the file in step 2.



Click on next and the driver will be installed.

**End of the instruction.**