

## Installation instruction USB driver and E-bike Connect Premium

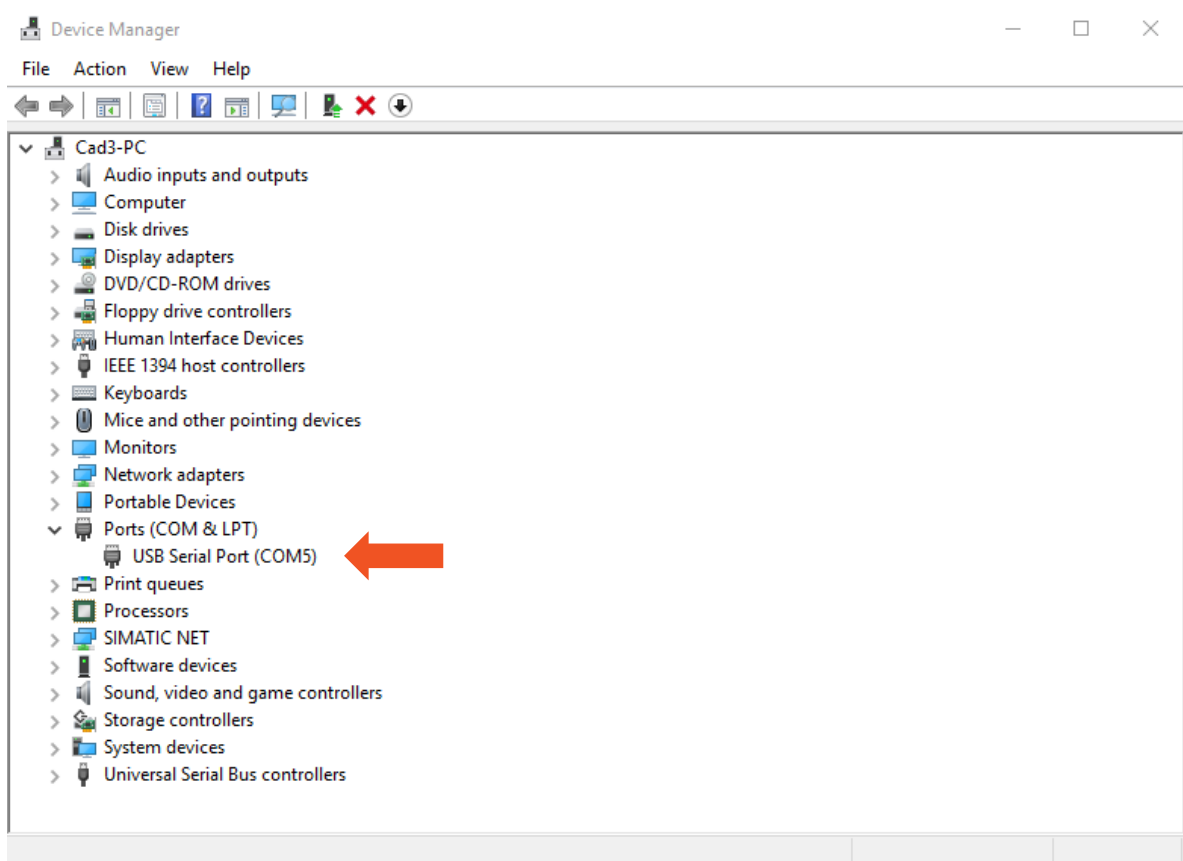
In these instructions you can find out how to correctly install the driver and the software for the Van Raam Silent system. The pc/ laptop has to be connected to the internet in order to download the driver and the software. **Please note!** This program is only supports Windows Vista, 7, 8 and 10.

### Installing the USB driver

1. Go to <https://www.vanraam.com/en-gb/pedal-support> and download [Driver USB Silent](#).
2. The file is opened as a .zip file. Extract the file on a location you can easily find. For example; "My documents".
3. Connect the Van Raam USB-cable to your PC/laptop.
4. The PC/laptop will now try to install the driver. Because this is a special driver, it might be that the PC/laptop can't find the proper driver. When the PC/laptop finds a proper driver and the installation is done correctly, you can skip step 5 through 8, and you can continue with installing E-bike connect.

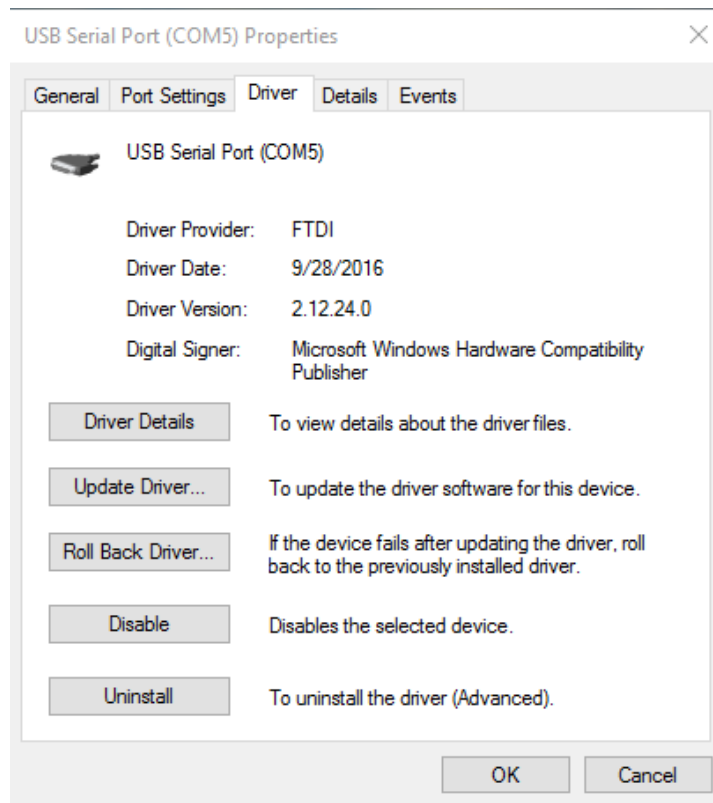
To install the driver correctly open Device manager (Start > search > Device manager).

5. You will see the next screen:

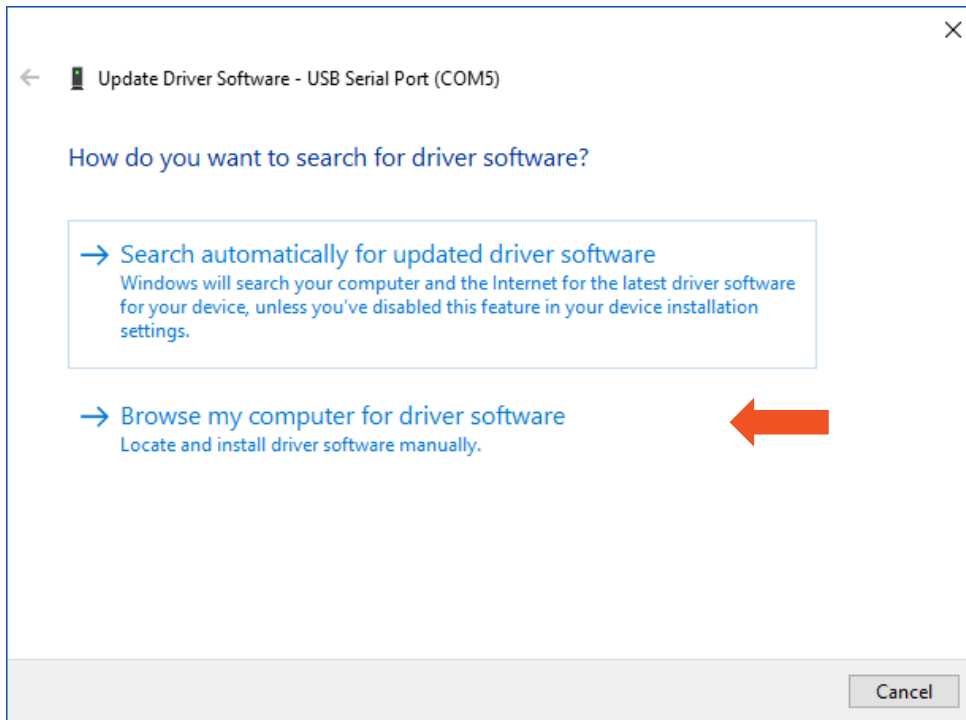


Right click on 'USB Serial Port' (orange arrow).

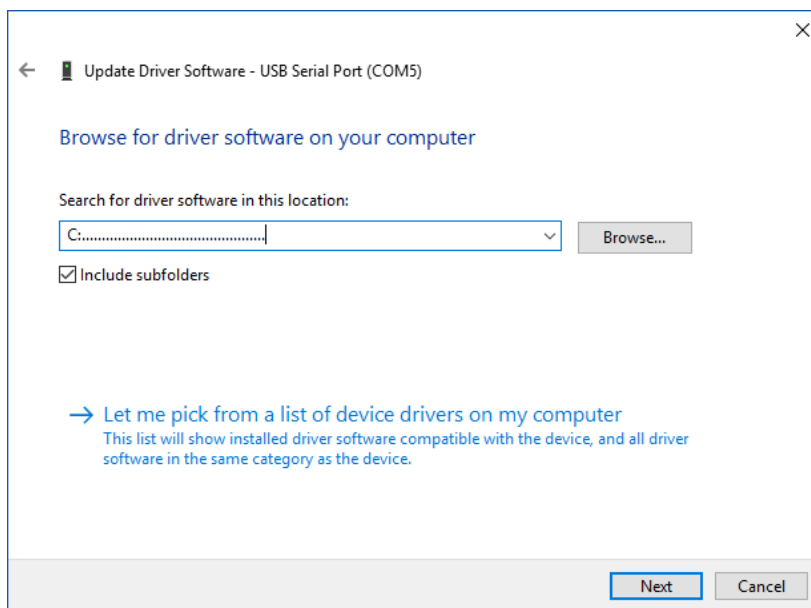
6. In the menu that appears click "properties". Go to the tab "Driver" in the menu "Properties".
7. You will get the next screen:



Click on "Update Driver" and in the next menu on "Browse my computer for driver software" (orange arrow below) to install the driver.



8. Now find the location where you extracted the files in step 2.



Click on next and the driver will be installed.